

DAISY

Libreria / Bookcase

Libreria componibile dal design moderno e rigoroso ma ricca di finiture e possibilità di composizione. Comprende elementi con ante rivestite, in vetro e in legno con lavorazione materica, inoltre cassetti e vani a giorno di diverse configurazioni. Struttura in legno. Particolari finitura metallo. Ante rivestite nubuck. Schienale nicchie in marmo o specchio bronzato.

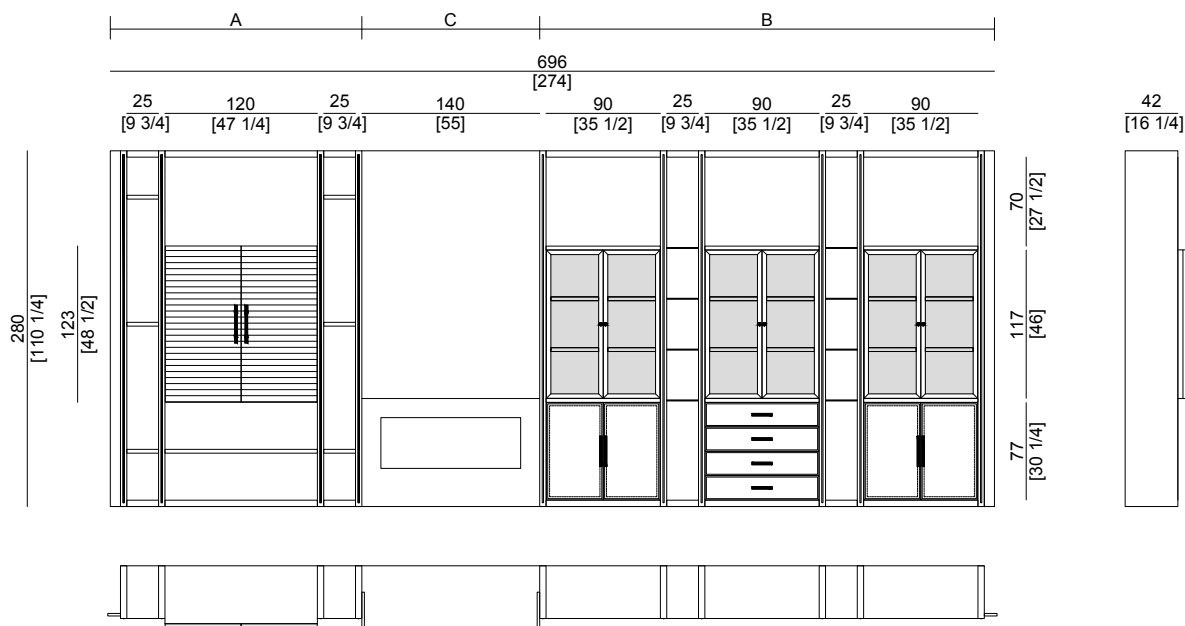
Bookcase system of modern rigorous design yet rich in finishes and possibilities of composition. Including modules with covered doors, in glass and wood with materic effect as well as drawers and open elements of different configurations. Structure in wood. Details in metal finish. Doors covered in nubuck. Niche back in marble or bronze mirror.



Composition A

Art. 1170.11

Dim.: 696x42x280 cm / 274x16¼x110¼ inch



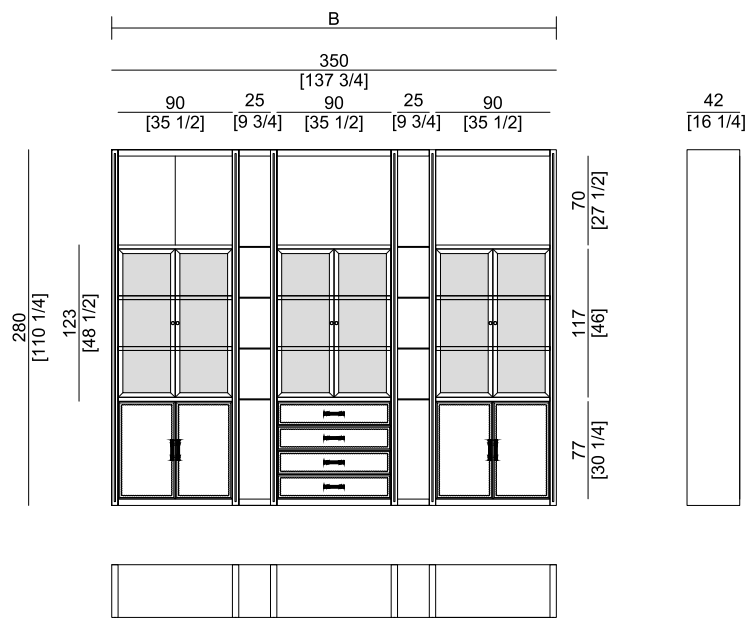
Composto da / Composed of:

Elemento A / Element A

Elemento B / Element B

Camino C / Fireplace C

Composition B
 Art. 1170.12
 Dim.: 350x42xh280 cm / 137³/₄x16¹/₄xh110¹/₄inch



Composition D
 Art. 1170.13
 Dim.: 520x42xh280 cm / 204³/₄x16¹/₄xh110¹/₄ inch

